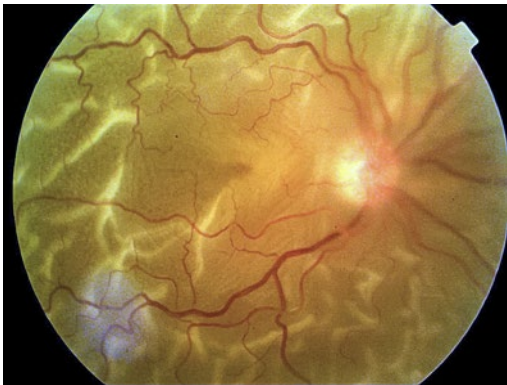




Emergency eye care

In the past, eye emergencies were often dealt with by the most junior members of the team. Now, there is a growing awareness that these emergencies are dealt with better when overseen by a more senior consultant. The British Emergency Eye Care Society was founded in 2013 to bring together practitioners who provide acute ophthalmology services in the UK to improve practice and promote excellence in patient care. To find out more, visit www.beecs.co.uk

Picture quiz



GARTNAVEL HOSPITAL

This is a fundus photo of a 60-year-old man, who had successful cataract surgery three years ago. His visual acuity is hand motions, and he complains of sudden, painless loss of vision in his right eye two weeks ago.

Tick ALL that are TRUE

Question 1 What is the most likely diagnosis?

- a. Optic atrophy
 b. Chronic open-angle glaucoma
 c. Posterior capsule opacification
 d. Retinal detachment
 e. Diabetic retinopathy

Question 2 What clinical signs can you see?

- a. Grey 'red reflex'
 b. Wrinkled and folded retina
 c. Swollen optic disc margins
 d. Retinal haemorrhages and exudates
 e. The normal choroidal blood vessels cannot be seen

Question 3 How should this patient be managed?

- a. Oral acetazolamide 500 mg immediately
 b. Immediate referral to a retinal surgeon
 c. Posterior capsulotomy
 d. Advice to stop smoking and abstain from alcohol
 e. Routine referral for laser treatment

ANSWERS

(1) All false except d.
 (2) a, b, & e, are true. c, & d, are false. The disc margins are slightly blurred. This is because they are out of focus. The retina is detached, so it is in front of the disc, which means either the disc or the retina will be out of focus in fundus photos of a retinal detachment.

(3) All false except b.

IAPB Council of Members meeting 2018

A total of 350 members of over 100 global and local eye health organisations recently met in India at the International Agency for the Prevention of Blindness (IAPB) Council of Members meeting in Hyderabad, India. On the agenda was

Universal Health Coverage and eye health, technology, and partnerships in eye care. A round-up with videos and photos from the different meetings are available online at <http://bit.ly/CoM18RP>



IAPB

Courses

MSc Public Health for Eye Care, London School of Hygiene & Tropical Medicine

Fully funded scholarships are available for Commonwealth country nationals. The course aims to provide eye health professionals with the public health knowledge and skills required to reduce blindness and visual disability. For more information visit www.lshtm.ac.uk/study/masters/mscphcec.html or email romulo.fabunan@lshtm.ac.uk

Free online courses

The ICEH Open Education for eye care programme offers a series of online courses in key topics in public health eye care. All the courses are free to access and include: Global Blindness, Eliminating Trachoma, Ophthalmic Epidemiology: Basic Principles and Application to Eye Disease.

More free courses coming! Certification also available.

For more information visit <http://iceh.lshtm.ac.uk/oe/>

Subscriptions

Contact Anita Shah
admin@cehjournal.org
Subscribe to our mailing list
web@cehjournal.org or visit www.cehjournal.org/subscribe

Visit us online
www.cehjournal.org
www.facebook.com/CEHJournal
<https://twitter.com/CEHJournal>

Next issue



COLUMBIASOPHTHALMOLOGYASSOCIATES.COM/BSNCOM

The next issue of the *Community Eye Health Journal* is on the theme **complicated cataract surgery**